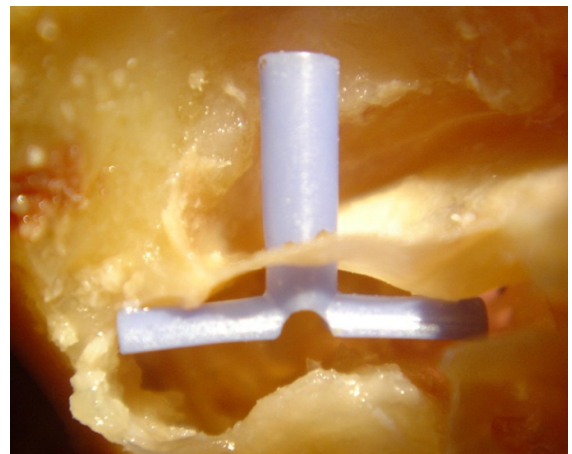
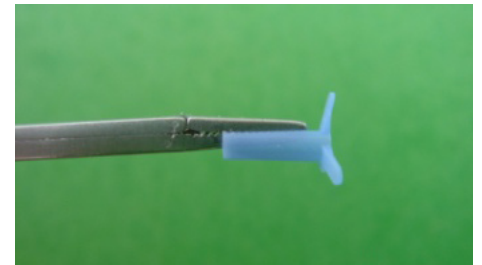


Triune Tube

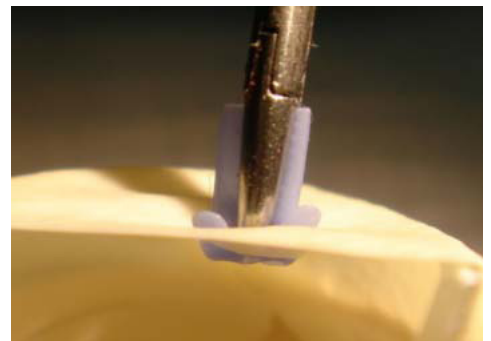


T-Tube

- 2469 Triune tubes were inserted from March 04 to March 07; 1829 tubes seen in follow-up with an average extrusion at 38 months.²
- Mean follow-up of 17.3 months with 6750 documented follow-up visits. ²
- Triune perforation rate is 2.6%² compared to 16.6% in 3,356 long term tubes reported by Kay, et al.³
- 5.3% Triune granuloma incidence, all resolving on drops.²
- 28% otorrhea rate² versus 33% in over 2100 long term tubes.³ (.2% Triunes removed for otorrhea² versus 4% in over 6500 tubes³)



Insertion



Triune Tube

Ref. #	Material	Lumen	Pkg.
510-121	Silicone	1.35mm	5/Bx
510-121C	PC Silicone	1.35mm	5/Bx
510-122	Silicone	1.35mm	10/Bx

Tiny Triune Tube by Bojrab

Ref. #	Material	Lumen	Pkg.
510-251	Silicone	0.76mm	5/Bx
510-251C	PC Silicone	0.76mm	5/Bx
510-252	Silicone	0.76mm	10/Bx

Tiny Triune Design Suggested by Dennis Bojrab, MD, Detroit, MI

1 The Triune, a New Silicone Tympanoplasty Tube, Frank Hill, MD Otolaryngology-Head and Neck Surgery (2006) 134, 524-525

2 Updated data from 2007 AAO Poster Presentation, Dr. Frank Hill

3 Kay DJ, Nelson MT, Rosenfeld RM. Meta-analysis of tympanostomy tube sequelae. *Otolaryngology Head Neck Surgery* 1999; 124:374-380.