

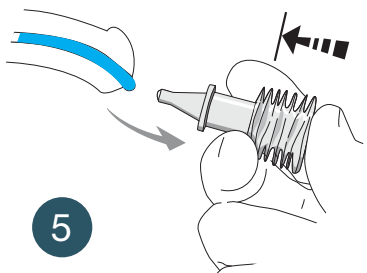
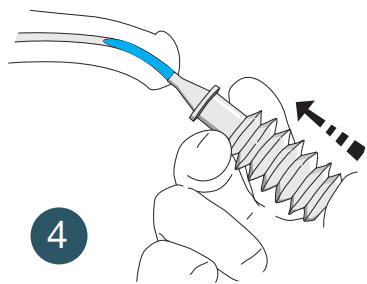
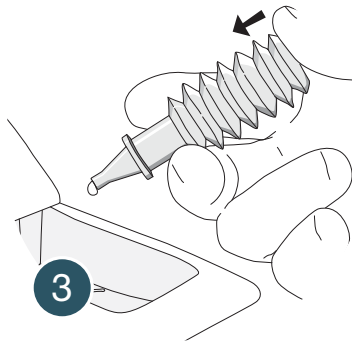
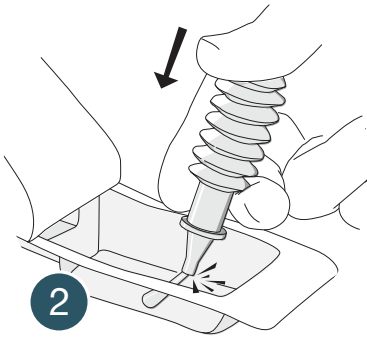
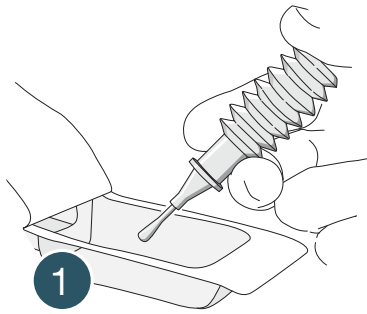
INSTRUCTIONS FOR USE



SIMPLY CLEVER SINGLE HAND USE

Cathejell

Sterile & Clear Lubricant Gel
Lignocaine 2%



Accordion syringe

The special design of the accordion syringe permits single hand opening and gentle instillation.

- 1 Open blister pack by peeling back the paper
- 2 Remove the tip by a short sharp "tap" downwards onto sterile field
- 3 Squeeze out one drop of gel with gentle pressure
- 4 Insert the applicator nozzle into the meatus and instill slowly
- 5 Empty the accordion syringe completely and maintain pressure until after removal



Endotherapeutics

Distributed by Endotherapeutics

Suite 1, Level 1, 51 Rawson Street, Epping NSW 2121, Australia

T: 1300 00 ENDO F: + 61 2 9869 7723

E: info@endotherapeutics.com.au www.endotherapeutics.com.au